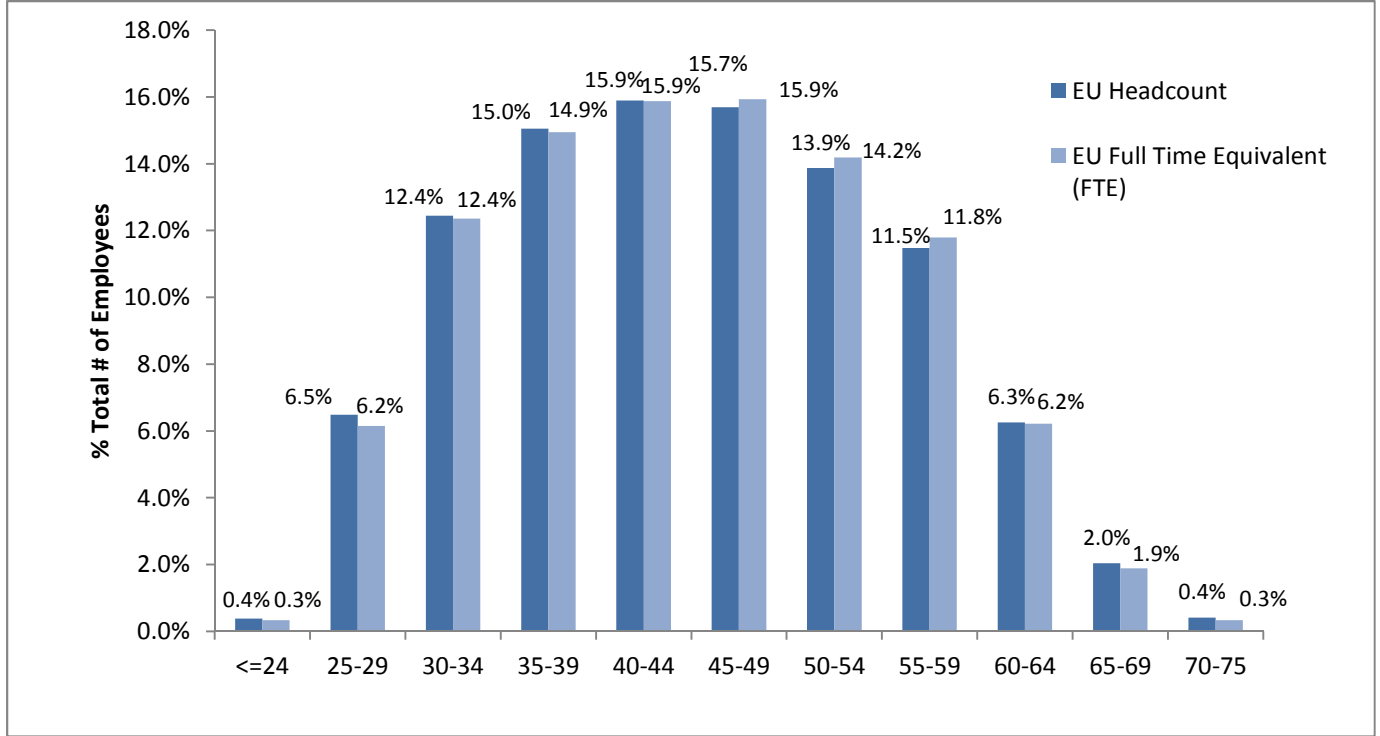


Unionized Educator (EU) Headcount and FTE by Age Increments

(Data based on 2015-2016 School Year)



Unionized Educators (EU)		
Age Increments	EU-HC	EU-FTE
<=24	0.4%	0.3%
25-29	6.5%	6.2%
30-34	12.4%	12.4%
35-39	15.0%	14.9%
40-44	15.9%	15.9%
45-49	15.7%	15.9%
50-54	13.9%	14.2%
55-59	11.5%	11.8%
60-64	6.3%	6.2%
65-69	2.0%	1.9%
70-75	0.4%	0.3%
Grand Total	100.00%	100.00%

FTE: Full Time Equivalent
HC: Headcount

EN: Non-Unionized Educators (Vice-Principals, Principals, Superintendents, etc.,)

EU: Unionized Educators (Teachers)

EX: Exempt Staff (Secretary Treasurers, HR Director, Counsellor, Finance, Administrators, etc.,)

SU: Unionized Support Staff (Education Assistants, Bus Drivers, Custodians, Electrician, Plumber, School Administration, Clerical etc.,)