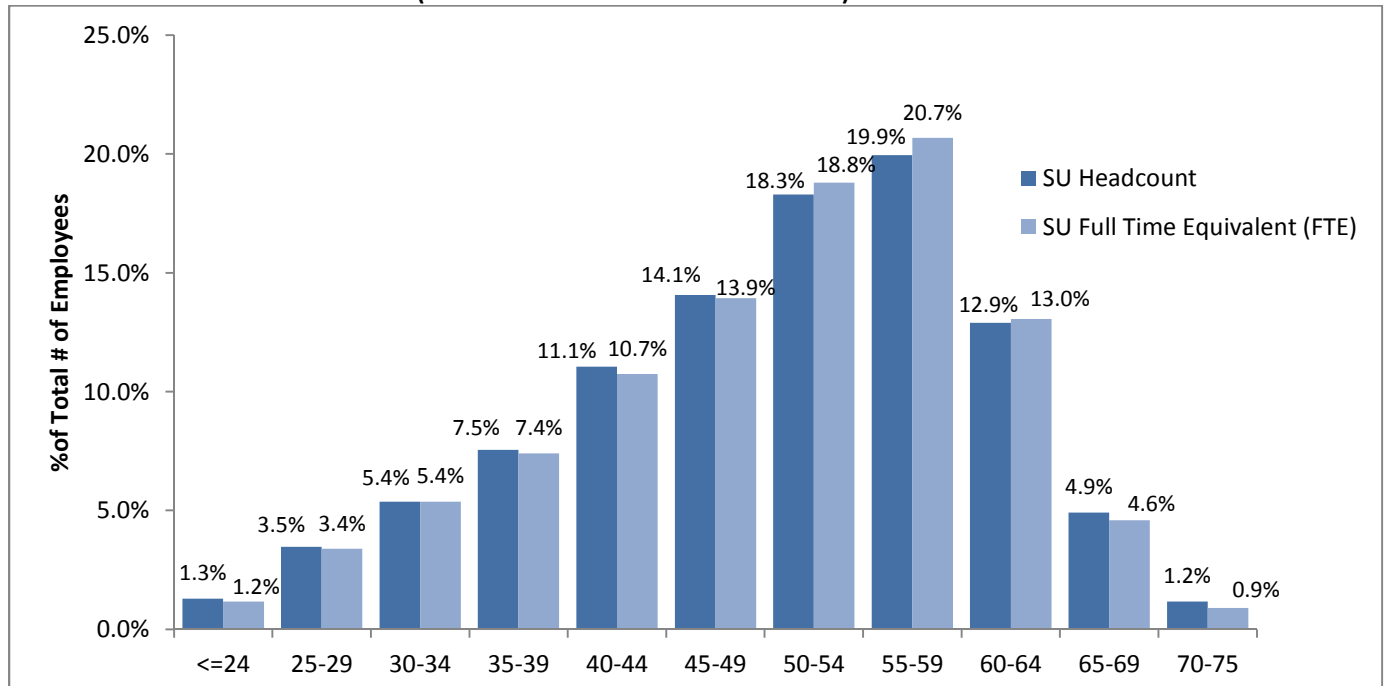


Support Staff (SU) Headcount and FTE by Age Increment

(Data Based on 2015-2016 School Year)



Unionized Support Staff		
Age Increments	SU-HC	SU-FTE
<=24	1.3%	1.2%
<29	3.5%	3.4%
30-34	5.4%	5.4%
35-39	7.5%	7.5%
40-44	11.1%	10.7%
45-49	14.1%	13.9%
50-54	18.3%	18.8%
55-59	19.9%	20.7%
60-64	12.9%	13.0%
65-69	4.9%	4.6%
70-75	1.2%	0.9%
Grand Total	100.00%	100.00%

FTE: Full Time Equivalent
HC: Headcount

EN: Non-Unionized Educators (Vice-Principals, Principals, Superintendents, etc.,)

EU: Unionized Educators (Teachers)

EX: Exempt Staff (Secretary Treasurers, HR Director, Counsellor, Finance, Administrators, etc.,)

SU: Unionized Support Staff (Education Assistants, Bus Drivers, Custodians, Electrician, Plumber, School Administration, Clerical etc.,)