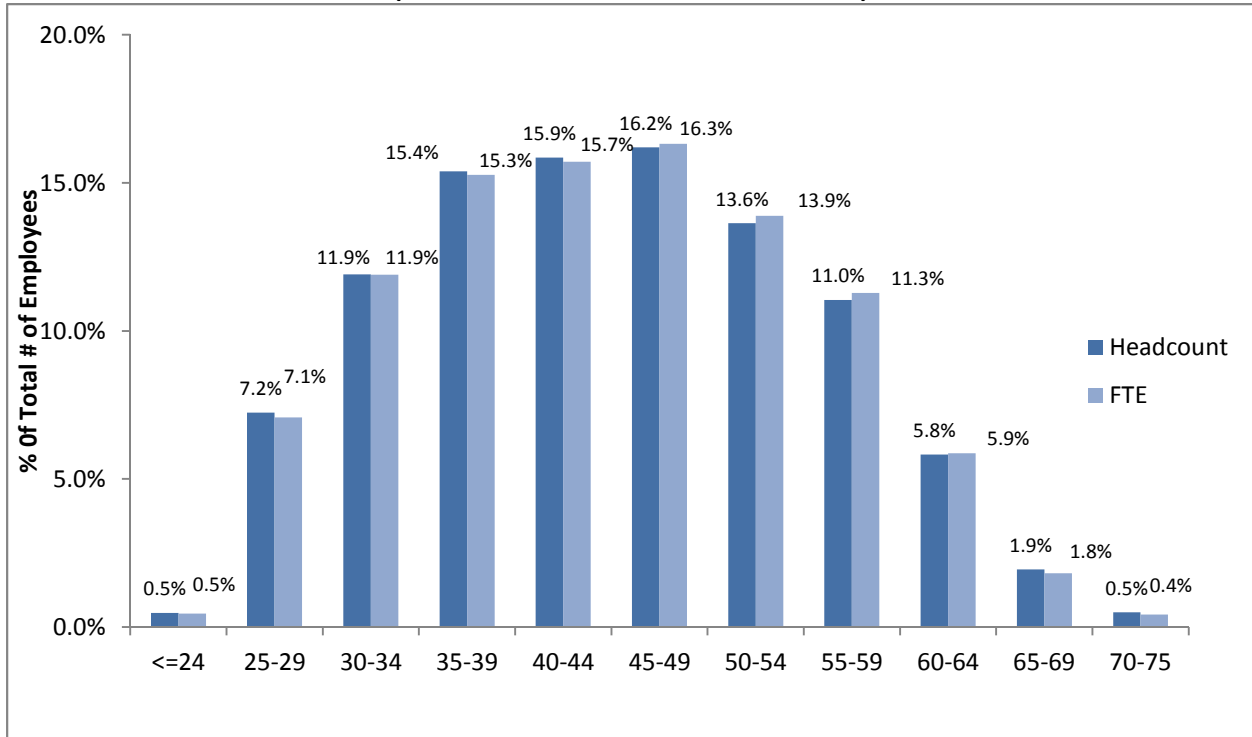




Employment Data and Analysis System

## Unionized Educator (EU) Headcount and FTE by Age Increments

(Data based on 2015-2016 School Year)



Educators Unionized		
Age Increments	Headcount	FTE
<=24	0.5%	0.5%
25-29	7.2%	7.1%
30-34	11.9%	11.9%
35-39	15.4%	15.3%
40-44	15.9%	15.7%
45-49	16.2%	16.3%
50-54	13.6%	13.9%
55-59	11.0%	11.3%
60-64	5.8%	5.9%
65-69	1.9%	1.8%
70-75	0.5%	0.4%

**FTE:** Full Time Equivalent

**HC:** Headcount

**EN:** Non-Unionized Educators (Vice-Principals, Principals, Superintendents, etc.,)

**EU:** Unionized Educators (Teachers)

**EX:** Exempt Staff (Secretary Treasurers, HR Director, Counsellor, Finance, Administrators, etc.,)

**SU:** Unionized Support Staff (Education Assistants, Bus Drivers, Custodians, Electrician, Plumber, School Administration, Clerical etc.,)

This data depicted herein is intended for statistical purposes and may not be copied or distributed without express consent. BCPSEA accepts no liability for any errors, omissions, or inaccuracies contained in this data, or for the consequences of any actions taken on the basis of the information provided.