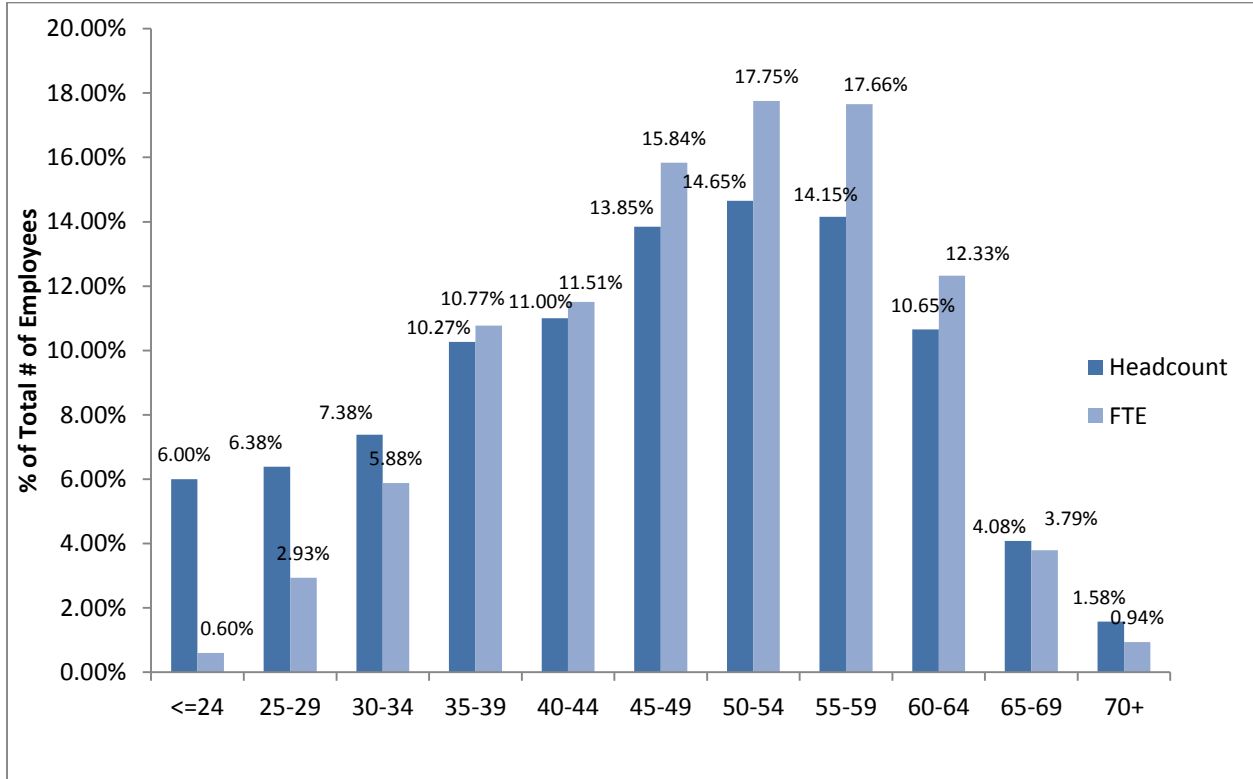




Employment Data and Analysis System

Exempt Staff (EX) Headcount and FTE by Age Increments

(Data based on 2019-2020 School Year)



| Exempt Staff(EX) | | |
|------------------|-----------|-------|
| Age Increments | Headcount | FTE |
| <=24 | 6.0% | 0.6% |
| 25-29 | 6.4% | 2.9% |
| 30-34 | 7.4% | 5.9% |
| 35-39 | 10.3% | 10.8% |
| 40-44 | 11.0% | 11.5% |
| 45-49 | 13.8% | 15.8% |
| 50-54 | 14.7% | 17.8% |
| 55-59 | 14.2% | 17.7% |
| 60-64 | 10.7% | 12.3% |
| 65-69 | 4.1% | 3.8% |
| 70+ | 1.6% | 0.9% |

FTE: Full Time Equivalent

HC: Headcount

EN: Non-Unionized Educators (Vice-Principals, Principals, Superintendents, etc.,)

EU: Unionized Educators (Teachers)

EX: Exempt Staff (Secretary Treasurers, HR Director, Counsellor, Finance, Administrators, etc.,)

SU: Unionized Support Staff (Education Assistants, Bus Drivers, Custodians, Electrician, Plumber, School Administration, Clerical etc.,)

This data depicted herein is intended for statistical purposes and may not be copied or distributed without express consent. BCPSEA accepts no liability for any errors, omissions, or inaccuracies contained in this data, or for the consequences of any actions taken on the basis of the information provided.